

# H85 Series

Mortise lock complying with DIN 18250, class 3, suitable for commercial buildings

Project locks

## H85C Series

- Fixed follower mounted in stainless steel ring. Forend latch and bolt stainless steel, prepared for profile cylinder with transmission.

### Features

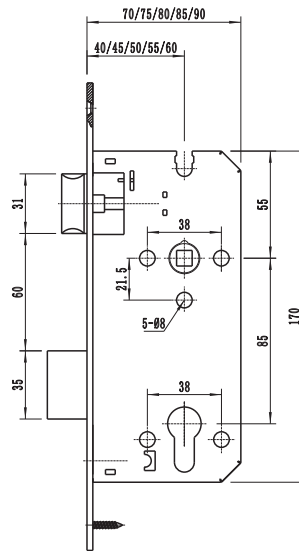
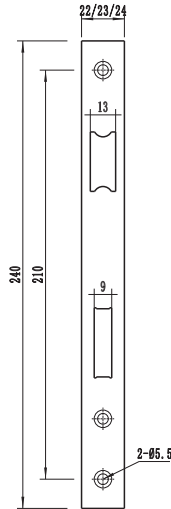
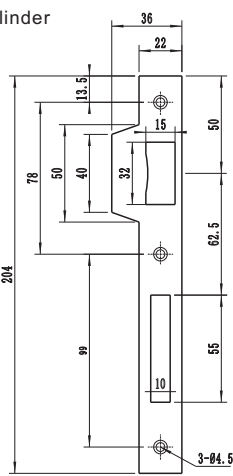
- According to DIN 18.250 class 3
- For wooden or steel doors
- Suitable for external fire or smoke protection doors
- Prepared for profile cylinders
- With key action
- Deadbolt 2-turns



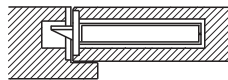
Follower 8X8



PZ = Profile cylinder (DIN 18252)



### Door Type



profile of a non rebated door with mortise lock (forend protruding on one side)

### Type

- H4085Z  H5585C
- H4585C  H6085C
- H5085C

### Technical Data

- Follower 8X8mm(nickel-coated)
- Distance 85mm
- Backset 45mm 50mm 55mm 60mm

### Forend

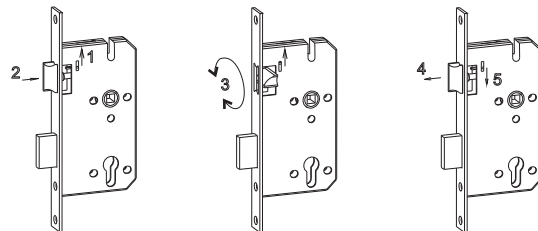
- Type round head, square head
- Thickness 3mm
- Width 22, 23, 24mm

### Forend finish

- Stainless steel SSS PSS PVD

### Accessories

- Striking plate-Stainless steel
- Pocket
- Lock and strike plate fixing screws



### Reverse left/right hand



**HSK**<sup>®</sup>  
Project locks

BEIJING HSK TECHNOLOGY CO.,LTD  
www.hsklock.com Email:info@houselock.com.cn TEL: 0086-10-85386092